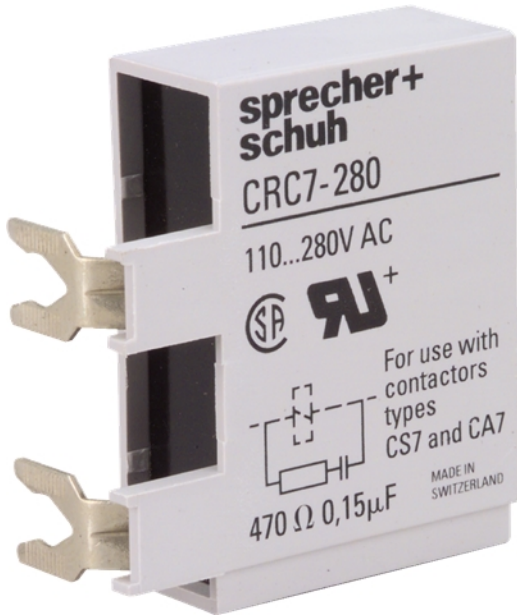


Catalogue No: **CRC7-280**

COIL SUPPRESSOR RC MODULE 110-280V AC

Motor Control and Drives > Motor Starting and Protection > Contactors > Sprecher + Schuh Contactors > Accessories and Spares > CA7 Accessories



Representative Photo Only
(actual product may vary based on configuration selections)

Surge suppressor RC module 110-280V AC ts CA7

- Three different contactor families provide a wide variety of contactor sizes, offering economy and selection
- Compact dimensions saves panel space

SPECIFICATIONS

Product Series	CA7 Accessories and Spare Parts
Component Type Motor Control and Drives	Accessory
Contactors Accessory / Spare Part Type	Suppressor module
Surge Arrester Type	RC Module
Rated Frequency	50 / 60 Hz
Coil Voltage, AC, Min	110 V AC
Coil Voltage, AC, Max	280 V AC
Un, Coil Voltage, AC @50Hz, Min	110 V AC min @50Hz
Un, Coil Voltage, AC @50Hz, Max	280 V AC max @50Hz
Un, Coil Voltage, AC @60Hz, Min	110 V AC min @60Hz
Un, Coil Voltage, AC @60Hz, Max	280 V AC max @60Hz
Compatible Product Series'	CA7 Accessories and Spare Parts
Details, compatible product series	CA7 all (with AC control).

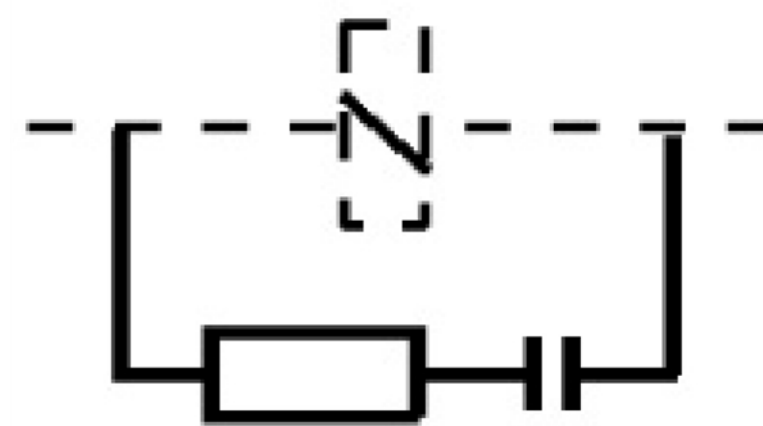
REFERENCES

IECEX Certificate	-
Supplier Declaration of Conformity:	-
Installation Guide:	-
User Manual:	-
Manufacturer Datasheet:	-
Manufacturer Catalogue & Product Selection:	CRC7280_Manufacturer_Catalogue

Catalogue No: **CRC7-280**

COIL SUPPRESSOR RC MODULE 110-280V AC

Motor Control and Drives > Motor Starting and Protection > Contactors > Sprecher + Schuh Contactors > Accessories and Spares > CA7 Accessories



Connection / Wiring Diagram