

Technical Information TI-P12

SITEMA PowerStroke

Mould Closing Devices series FSKP

- ☑ drive system for powerful forces on a short stroke
- ☑ pneumatic actuation
- ☑ closing force up to 3 tonnes



Contents

1	Function	1
2	Applications	1
3	Function description	2
4	Installation prerequisites	3
5	S types for use with separate rod	5
6	Z types for use with standard cylinder	6

A detailed description regarding control and use of the SITEMA PowerStroke is given in the "Assembly Instructions MA-P12".

1 Function

The Mould Closing Device SITEMA PowerStroke series FSKP clamps and actuates a rod in one direction (closing direction).

A force proportional to the operating pressure is exerted to the rod by friction.

Only a pneumatic system (and no hydraulic system) is needed for the use of this series.

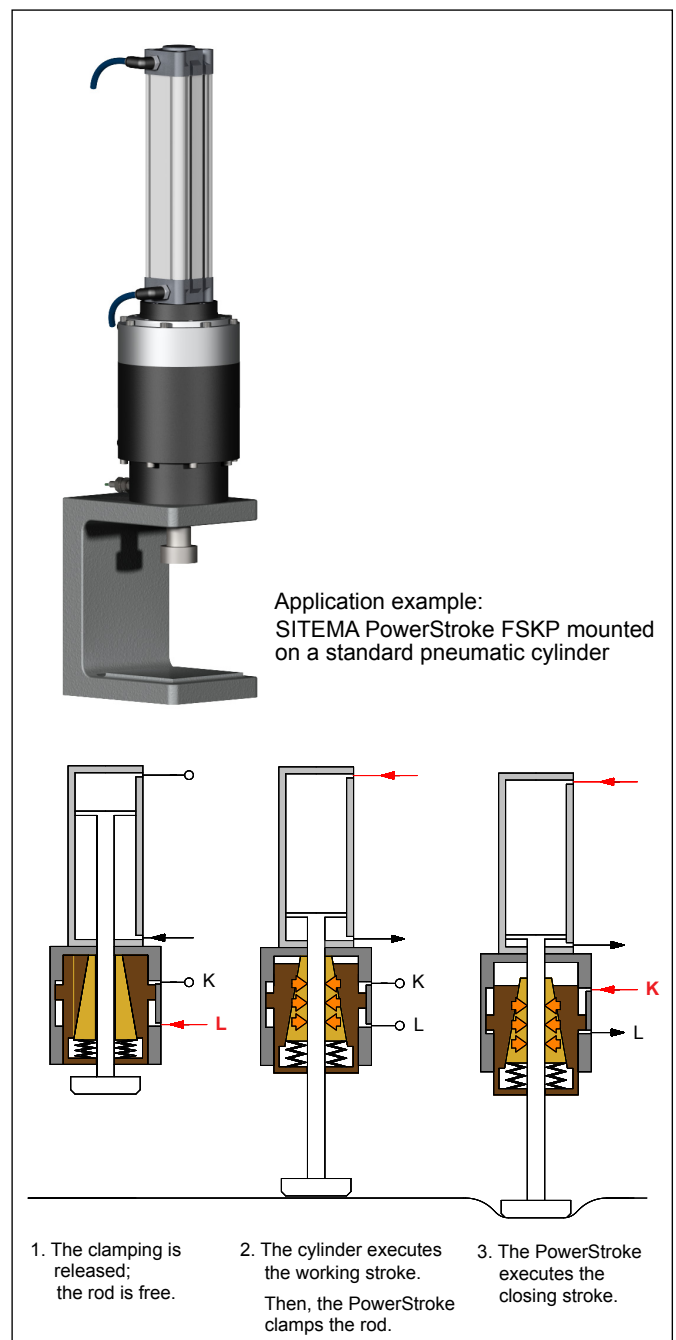
2 Applications

The SITEMA PowerStroke series FSKP with its integrated short stroke cylinder is typically used in:

- mould closing
- die cutting
- stamping
- riveting
- bending
- metal forming
- compression moulding
- crushing
- jointing
- fixation

The series FSKP is available in **2 styles**:

- **S types:** for use with **separate clamping rod**
- **Z types:** for use with **standard pneumatic cylinder** according to ISO 15552



3 Function description

The following function description specifies the typical case if the SITEMA PowerStroke is mounted to the stationary machine element. Then, the rod is moving. The closing direction is shown as it would appear in this case.

Alternatively, it is also possible to mount the SITEMA PowerStroke to the moving machine element. Then, the rod acts as a connection to the stationary machine element. In this case, the closing direction is reversed

3.1 Design

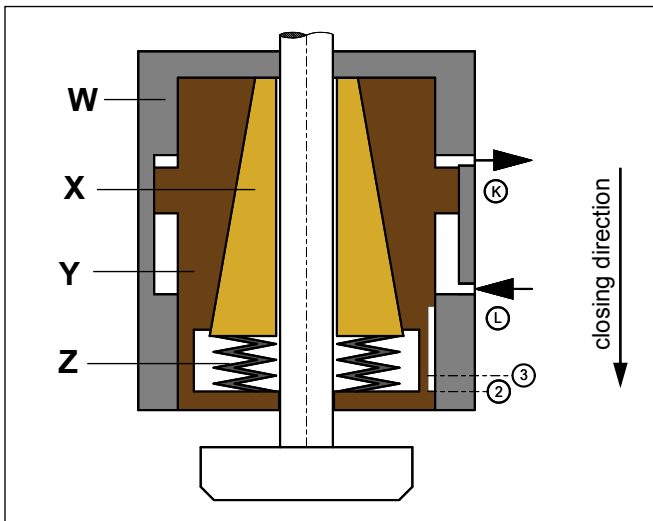


Fig. 1: Design of the SITEMA PowerStroke (clamping released)

The clamping system consists of the clamping sleeve (X) Fig. 1 and the clamping ring (Y) Fig. 1 which are braced against each other by springs (Z) Fig. 1. The clamping ring is supported in the housing (W) Fig. 1 so that it can be moved pneumatically via the pressure ports L and K.

3.2 Release the clamping

If the required minimum pressure is applied to the port L (port K pressure-free), then the clamping ring moves counter to the closing direction until it reaches the stop, thereby opening the clamping system (see Fig. 1).

Proximity switch 2 signals "clamping released".

3.3 Clamp the rod

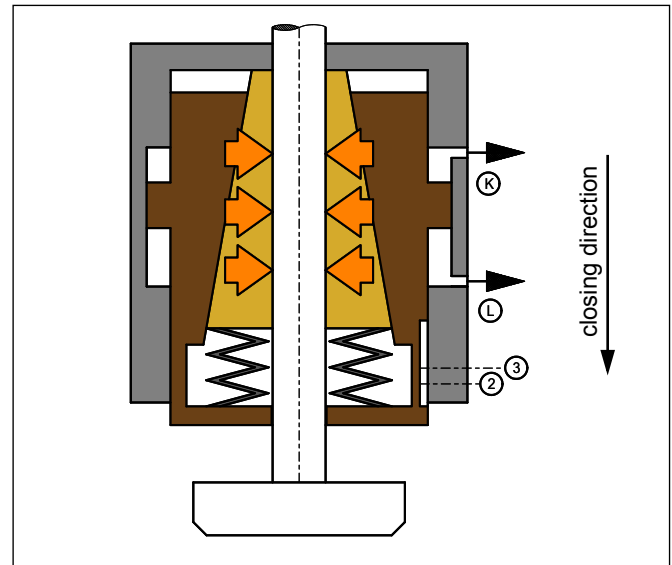


Fig. 2: SITEMA PowerStroke is about to clamp the rod

If pressure port L is switched to pressure-free, the SITEMA PowerStroke clamps the rod. The unit is ready to execute the closing stroke.

Proximity switch 2 "clamping released" is no longer energized.

3.4 Execute the closing stroke

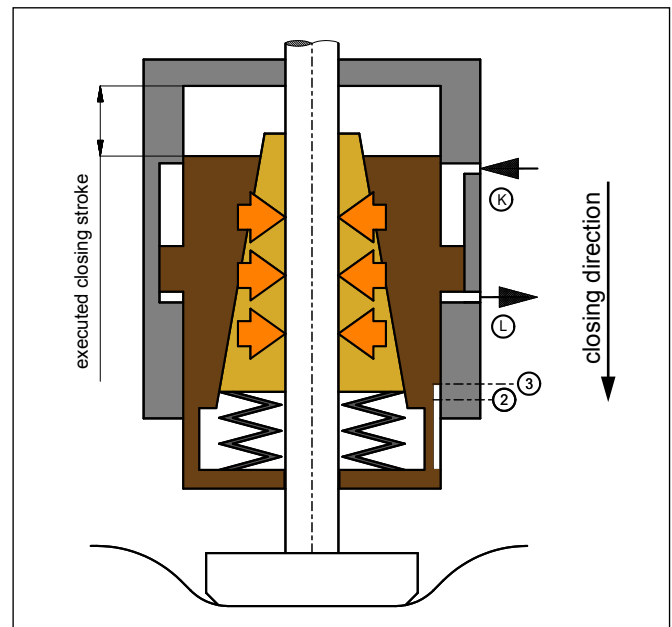


Fig. 3: Design of the SITEMA PowerStroke (after closing stroke)

When the rod is clamped, pressure can be applied to pressure port K. This generates the clamping force and the rod is moved into the closing direction.

The resulting closing stroke is only limited by the counterforce of the tool.

The working force of the SITEMA PowerStroke can easily be controlled by the variation of the pressure on pressure port K.

If the complete closing stroke is executed, proximity switch 3 will signal "stroke limit reached". During normal operation, this signal should never be active (see *Chapter 4.4 "Monitoring by proximity switches"*). With the help of this signal, the correct function of the unit can be constantly controlled.

To release the clamping, pneumatic pressure at port K must be switched off and pressure must be applied to the port L. As a result, the rod first moves back a little bit (previously-executed closing stroke) and then the clamping gets released.

4 Installation prerequisites

4.1 Styles

The SITEMA PowerStroke series FSKP is available in **2 styles**:

- S types for use with **separate clamping rod** (page 5)
- Z types for use with **standard pneumatic cylinder** ISO 15552 (page 6)

4.2 Rod requirements

The SITEMA PowerStroke will operate correctly only if the rod has a suitable surface:

- ISO tolerance field f7 or h6
- induction hardened min. HRC 56, surface hardening depth:
 \varnothing up to 30 mm: min. 1 mm
 \varnothing over 30 mm: min. 1.5 mm
- surface roughness: $R_z = 1$ to $4 \mu\text{m}$ ($R_a 0.15 - 0.3 \mu\text{m}$)
- protection against corrosion, e.g. hard chromium plating: $20 \pm 10 \mu\text{m}$, 800 – 1 000 HV
- lead-in chamfer, rounded:
 \varnothing 18 mm up to \varnothing 80 mm: min. $4 \times 30^\circ$
 \varnothing over 80 mm up to \varnothing 180 mm: min. $5 \times 30^\circ$
 \varnothing over 180 mm up to \varnothing 380 mm: min. $7 \times 30^\circ$

The rod may not be lubricated with grease.

For example, standard rods with this specification can be used:

- Piston rods (ISO tolerance field f7), hard chrome plated
- Rods for linear ball bearings (ISO tolerance field h6)

Generally, the basic rod material has to have sufficient yield strength. In the case of compression-loaded rods, sufficient buckling resistance must be assured.

4.3 Control

Pressure fluid

The compressed air must be dried and filtered. SITEMA recommends compressed air according to ISO 8573-1:2010 [7:4:4].

Pressure port L "release"

Port L must be pressurized continuously as long as the rod is moving or the rod is being inserted. In this way the clamping is released.

Before the closing stroke can be executed, the pressure for pressure port L must be switched off. This prepares the clamping system for the closing stroke.

Pressure port K "closing stroke"

Pressure corresponding to the desired closing force is applied to port K after insertion of the rod and after port L is pressure-free. Thus a clamping force corresponding to the working pressure is realized and the closing stroke is executed.

⚠ In no situation may pressure be applied to both pressure ports L and K at the same time.

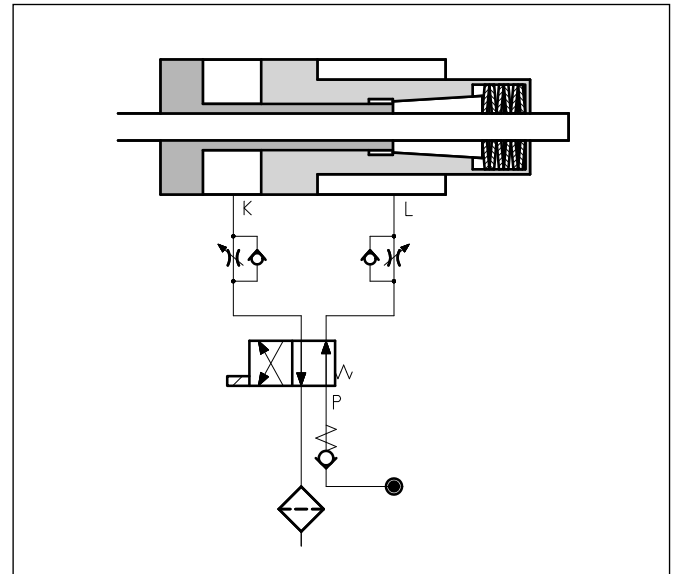


Fig. 4: Principal scheme of pneumatic control

The pneumatic control has to be provided by the customer on the basis of the diagram above.

In this diagram only logical connections are illustrated. It is the responsibility of the manufacturer to ensure the compliance to all relevant legal regulations and to check all functions after the installation.

A clamping of the PowerStroke during the fast movement of the primary drive has to be avoided, as this can lead to high dynamic braking forces. If necessary, precautions have to be made to avoid unintended pressure losses at release port L.

If a particular quick response of the SITEMA PowerStroke is required, the following preconditions must be met:

- short piping distances
- fast valve response times
- installation of a dump valve
- appropriate control

Notes

1. The rod may not leave the clamping unit during operation. However, special designs which allow the rod to be removed and inserted with each stroke are possible. In this case, the rod may only be inserted in the released state (proximity switch signal 2 active) through the centre ring. Before the rod may be clamped, it has to be ensured, that the rod is inserted to at least the "minimum insertion depth" indicated in the special design's specifications.
2. During the release process force on the rod is not allowed. This has to be considered in the control of the primary drive.
3. In applications with vertical moves: It may be necessary to induce a counterforce with the primary drive, in the range of the load of the rod and the moved tool (counter balance). So the lowering of the machine part can be prevented after releasing the clamping.

4.4 Monitoring by proximity switches

Proximity switch 2 "clamping released" indicates that the rod is not clamped by the SITEMA PowerStroke. The signal can be used to activate the primary drive.

Proximity switch 3 "stroke limit reached" signals that the complete stroke has been executed and the internal stop is reached.

In this situation, the closing force is no longer fully active, see also *Chapter 3.4 "Execute the closing stroke"*.

4.5 Operating conditions

The immediate environment of the SITEMA PowerStroke in its standard design must be dry and clean.

Environmental contamination, such as grease, dirt, grinding dust, chips require special protective measures. Liquids such as coolants, conservation agents and other liquids or chemicals inside the housing may reduce the holding force.

It is particularly important not to apply grease to the rod because lubricants influence the clamping force.

- The machine manufacturer must take measures to ensure that contamination cannot enter the interior of the housing.
- In case of doubt, please contact SITEMA.

The permitted surface temperature is 0 to +60 °C.

4.6 CE marking

The SITEMA PowerStroke is designed as a component (partly completed machinery) to be integrated into a machine or system and as such cannot be CE certified itself. The seller of the machine or system must provide information on the SITEMA PowerStroke with the overall documentation and if applicable ensure that the machine or system is CE certified.

5 S types for use with separate rod

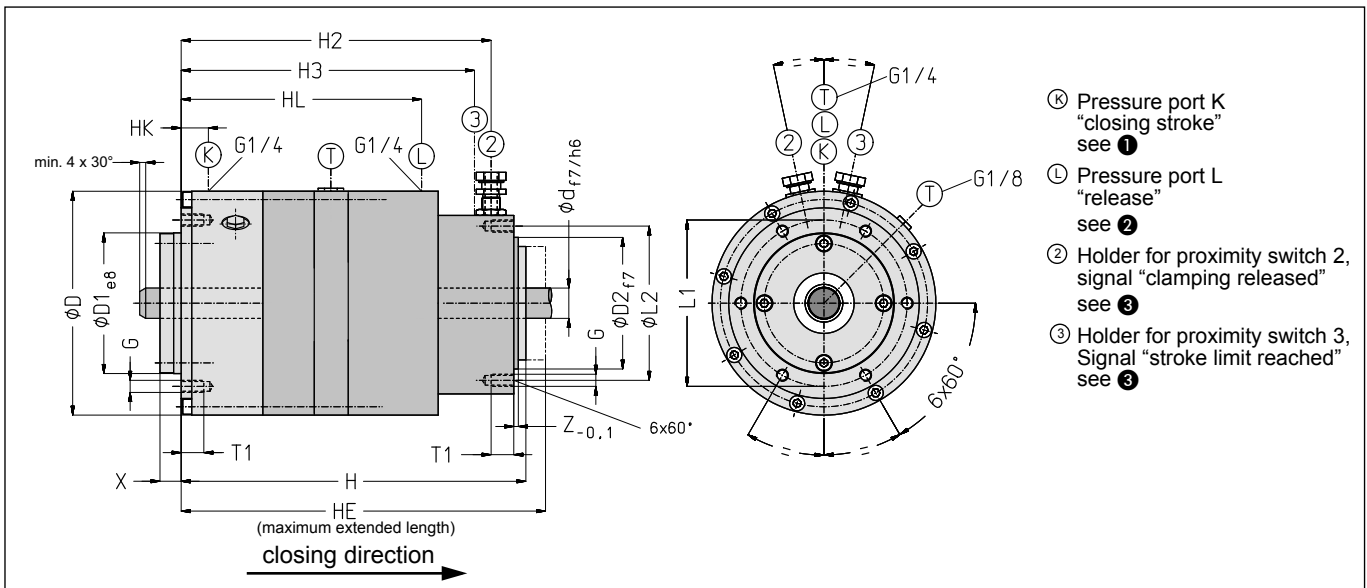


Fig. 5: Dimensions SITEMA PowerStroke series FSKP, S types for use with **separate rod**

Type		FSKP16/3-S	FSKP20/3-S	FSKP25/3-S
ID no.		FSKP 016 01	FSKP 020 01	FSKP 025 01
Closing force at nominal pressure	kN	11.5	19	27.5
Closing force at max. closing pressure	kN	12.5	21	30
Technical data				
Rod diameter [d]	mm	16	20	25
External diameter [D]	mm	126	148	177
Total length [H]	mm	227	228	254
Max. extended length [HE]	mm	244	245	271
Closing stroke	mm	12	12	12
Weight ca.	kg	7.5	10	15.5
Pneumatic data				
Nominal pressure for closing force ①	bar	6	6	6
Max. closing pressure ① / max. release pressure ②	bar	6.5	6.5	6.5
Operating volume K at complete stroke ①	cm³	380	560	790
Min. release pressure ②	bar	5	5	5
Operating volume L at complete stroke ②	cm³	120	180	240
Connection dimensions				
HK	mm	18	18	21
HL	mm	160.5	159	171
H2	mm	195.5	196	214.5
H3	mm	191.5	192	210.5
D1	mm	80	95	145
X	mm	14	14	26.5
D2	mm	85	100	110
Z	mm	3	3.5	3.5
L1	mm	92	110	160
L2	mm	95	115	125
G		M 6	M 8	M 8
T1	mm	12	15	18

Subject to modification without prior notice

③ Proximity switch holders are provided for standard proximity switches M 8 x 1 with a nominal switching distance of 1.5 mm (flush mountable). For easier service, the proximity switch holders have a depth stop and are pre-adjusted when delivered from the factory. The switches only need to be inserted to the stop and then clamped.

The proximity switches are not included in the standard scope of delivery but are available as accessories.

6 Z types for use with standard cylinder ISO 15552

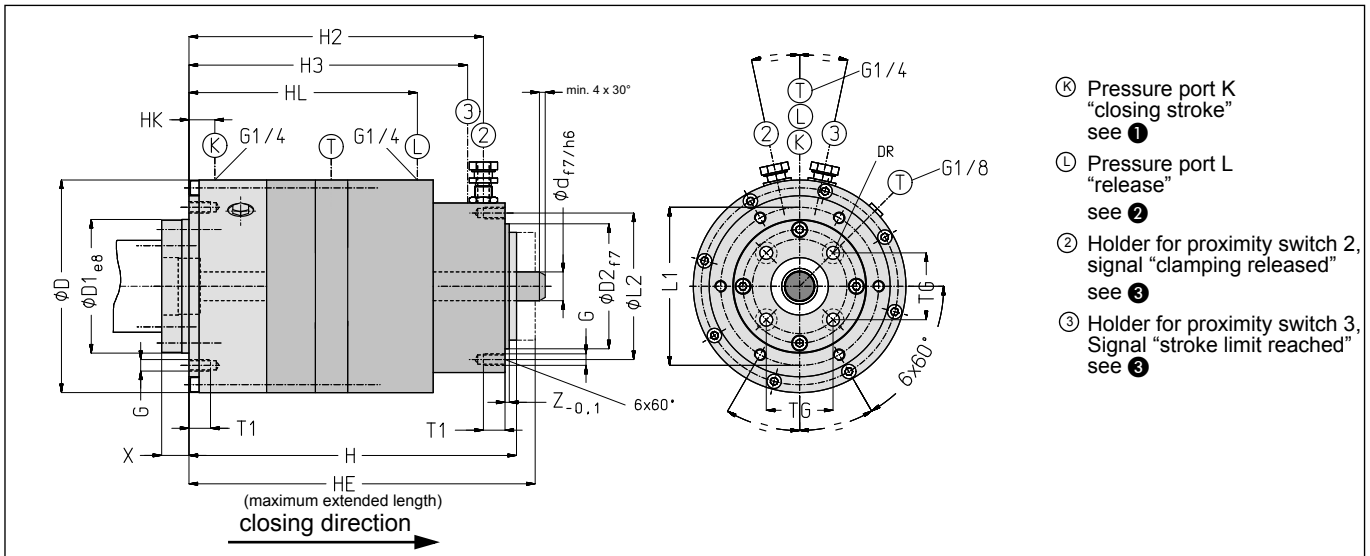


Fig. 6: Dimensions SITEMA PowerStroke series FSKP, Z types for use with **standard cylinder**

Type		FSKP16/3-Z	FSKP20/3-Z	FSKP25/3-Z
ID no.		FSKP 016 11	FSKP 020 11	FSKP 025 11
Closing force at nominal pressure	kN	11.5	19	27.5
Closing force at max. closing pressure	kN	12.5	21	30
Technical data				
Standard cyl. ISO 15552 piston diameter / rod diameter [d]	mm	40 / 16	50 / 20	80 / 25
Required piston rod extension for stand. cyl. ISO 15552	mm	225	225	250
External diameter [D]	mm	225	225	250
Total length [H]	mm	126	148	177
Max. extended length [HE]	mm	227	228	254
Closing stroke	mm	244	245	271
Weight ca.	mm	12	12	12
Pneumatic data				
Nominal pressure for closing force ①	bar	6	6	6
Max. closing pressure ① / max. release pressure ②	bar	6.5	6.5	6.5
Operating volume K at complete stroke ①	cm³	380	560	790
Min. release pressure ②	bar	5	5	5
Operating volume L at complete stroke ②	cm³	120	180	240
Connection dimensions				
HK	mm	18	18	21
HL	mm	160.5	159	171
H2	mm	195.5	196	214.5
H3	mm	191.5	192	210.5
D1	mm	80	95	145
X	mm	14	19	26.5
D2	mm	85	100	110
Z	mm	3	3.5	3.5
L1	mm	92	110	160
L2	mm	95	115	125
G		M 6	M 8	M 8
T1	mm	12	15	18
TG	mm	38	46.5	72
DR	mm	6.6	9	11

Subject to modification without prior notice

③ Proximity switch holders are provided for standard proximity switches M 8 x 1 with a nominal switching distance of 1.5 mm (flush mountable). For easier service, the proximity switch holders have a depth stop and are pre-adjusted when delivered from the factory.

The switches only need to be inserted to the stop and then clamped. The proximity switches are **not** included in the standard scope of delivery but are available as accessories.